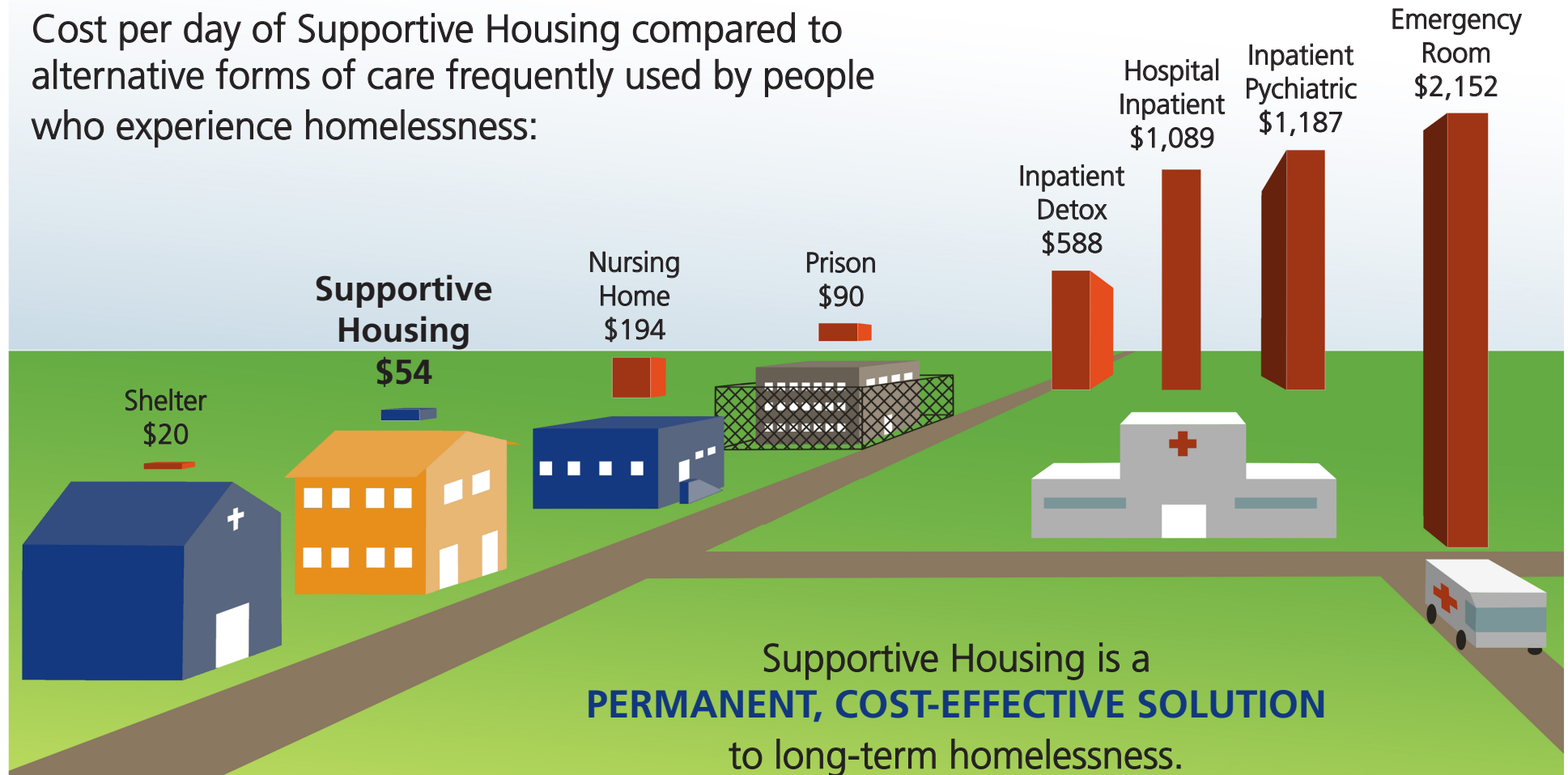


Supportive Housing: Cost Effective with Better Outcomes

Cost per day of Supportive Housing compared to alternative forms of care frequently used by people who experience homelessness:



Sources: Shelter - CT Coalition to End Homelessness; Supportive Housing - Corporation for Supportive Housing; Prison - CT Dept. of Corrections; Nursing Home - CT Dept. of Social Services (DSS); Inpatient Detox - CT Dept. of Mental Health and Addiction Services (DMHAS); Hospital Inpatient - Yale-New Haven Hospital; Inpatient Psychiatric - CT Dept of Mental Health and Addiction Services (DMHAS); Emergency Room - St. Francis Hospital, Hartford
Created September 2013 by Partnership for Strong Communities. Data updated June 2011 by Partnership for Strong Communities.